



TERMINALS

BRONZE STRAIGHT BOLT TERMINAL TUBE TO FLAT

BRONZE
STF4

Copper alloy terminal for connecting copper tubing to copper flat. Side formed pad is standard for flush mounting. Suitable for normal and heavy duty applications. Tongue holes have NEMA spacing.

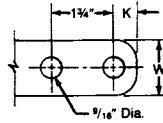
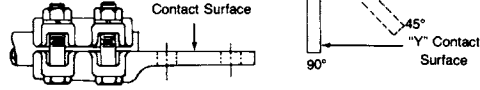
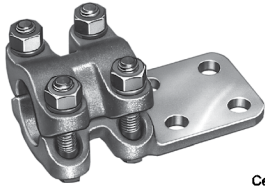


FIG. 1

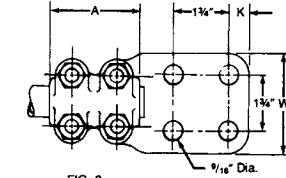
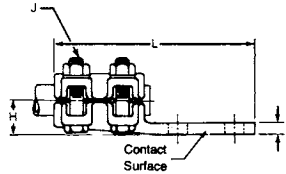


FIG. 2

Material: Castings—bronze alloy
Clamping hardware—silicon bronze or stainless steel

Center formed tongues may be obtained by adding suffix "CF" to catalog number.

Example: STF420CCF

45° & 90° angle connectors may be obtained by specifying desired angle.

Example: STF414B2Y90

Product Data & Conductor Size

CATALOG NUMBER	FIG. NO.	CONDUCTOR SIZE TUBING IPS	DIMENSIONS INCHES (MM)							APPROX. WT. EACH LBS. (KG)
			L	A	H	K	T	W	J	
STF404B3	1	1/2	5-3/4 (146.05)	2-1/2 (63.5)	7/8 (22.22)	5/8 (15.88)	5/16 (7.94)	1-1/2 (38.1)	3/8 (9.52)	1.8 (.8)
STF406B2	1	3/4	6 (152.4)	2-1/2 (63.5)	1-1/8 (28.58)	5/8 (15.88)	3/8 (9.52)	2 (50.8)	1/2 (12.7)	3.6 (1.6)
STF406C	2	3/4	6 (152.4)	2-1/2 (63.5)	1-1/8 (28.58)	5/8 (15.88)	3/8 (9.52)	3 (76.2)	1/2 (12.7)	3.8 (1.7)
STF410B2	1	1	5-5/8 (142.88)	2-1/2 (63.5)	1-1/8 (28.58)	5/8 (15.88)	5/16 (7.94)	2 (50.8)	1/2 (12.7)	3.3 (1.5)
STF410C	2	1	5-3/4 (146.05)	2-1/2 (63.5)	1-1/8 (28.58)	5/8 (15.88)	3/8 (9.52)	3 (76.2)	1/2 (12.7)	4.2 (1.9)
STF412B2	1	1-1/4	6 (152.4)	2-3/4 (69.85)	1-3/8 (34.92)	5/8 (15.88)	3/8 (9.52)	2 (50.8)	1/2 (12.7)	4.2 (1.9)
STF412C	2	1-1/4	6 (152.4)	2-3/4 (69.85)	1-3/8 (34.92)	5/8 (15.88)	3/8 (9.52)	3 (76.2)	1/2 (12.7)	4.5 (2.0)
STF414B2	1	1-1/2	6 (152.4)	2-3/4 (69.85)	1-5/8 (41.28)	5/8 (15.88)	7/16 (11.11)	2 (50.8)	1/2 (12.7)	4.1 (1.9)
STF414C	2	1-1/2	6 (152.4)	2-3/4 (69.85)	1-5/8 (41.28)	5/8 (15.88)	3/8 (9.52)	3 (76.2)	1/2 (12.7)	5.0 (2.3)
STF420B2	1	2	6-1/4 (158.75)	2-3/4 (69.85)	1-3/4 (44.45)	5/8 (15.88)	7/16 (11.11)	2 (50.8)	1/2 (12.7)	4.5 (2.0)
STF420C	2	2	6 (152.4)	2-3/4 (69.85)	1-3/4 (44.45)	1-1/8 (28.58)	3/8 (9.52)	3 (76.2)	1/2 (12.7)	5.5 (2.5)
STF420D	2	2	7-1/8 (180.98)	2-3/4 (69.85)	1-3/4 (44.45)	5/8 (15.88)	3/8 (9.52)	4 (101.6)	1/2 (12.7)	6.7 (3.0)
STF424C	2	2-1/2	6 (152.4)	2-3/4 (69.85)	2-1/8 (53.98)	1-1/8 (28.58)	1/2 (12.7)	3 (76.2)	1/2 (12.7)	6.3 (2.9)
STF424D	2	2-1/2	7-3/4 (196.85)	3-1/4 (82.55)	2-1/8 (53.98)	1-1/8 (28.58)	1/2 (12.7)	4 (101.6)	1/2 (12.7)	7.4 (3.4)
STF430C	2	3	7 (177.8)	3-1/2 (88.9)	2-1/2 (63.5)	5/8 (15.88)	5/8 (15.88)	3 (76.2)	5/8 (15.88)	10.9 (4.9)
STF430D	2	3	8 (203.2)	3-1/2 (88.9)	2-1/2 (63.5)	1-1/8 (28.58)	5/8 (15.88)	4 (101.6)	5/8 (15.88)	11.8 (5.3)
STF434D	2	3-1/2	8-1/4 (209.55)	3-1/2 (88.9)	2-7/8 (73.02)	1-1/8 (28.58)	3/4 (19.05)	4 (101.6)	5/8 (15.88)	15.2 (6.9)
STF440D	2	4	8-1/2 (215.9)	4 (101.6)	3-1/4 (82.55)	1-1/8 (28.58)	3/4 (19.05)	4 (101.6)	5/8 (15.88)	18.3 (8.3)

SA
18